



UNIT PLANS

2 Bedroom homes

116.01 Sq.m (1249 Sq.ft.) - 128.57 Sq.m (1384 Sq.ft.)



2
Bedroom
Homes



The information depicted herein viz., master plans, floor plans, furniture layout, fittings, illustrations, specifications, designs, dimensions, rendered views, colours, amenities and facilities etc., are subject to change without notifications as may be required by the relevant authorities or the developer's architect, and cannot form part of an offer or contract. Whilst every care is taken in providing this information, the Developer cannot be held liable for variations. All illustrations and pictures are artist's impression only. The information are subject to variations, additions, deletions, substitutions and modifications as may be recommended by the company's architect and/or the relevant approving authorities. The Developer is wholly exempt from any liability on account of any claim in this regard.

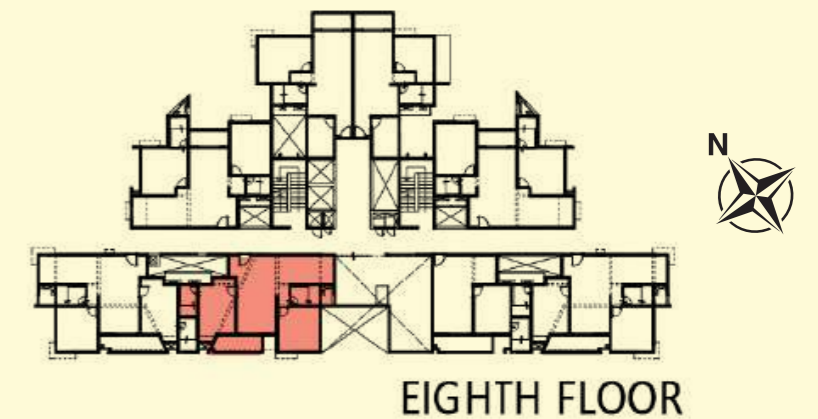
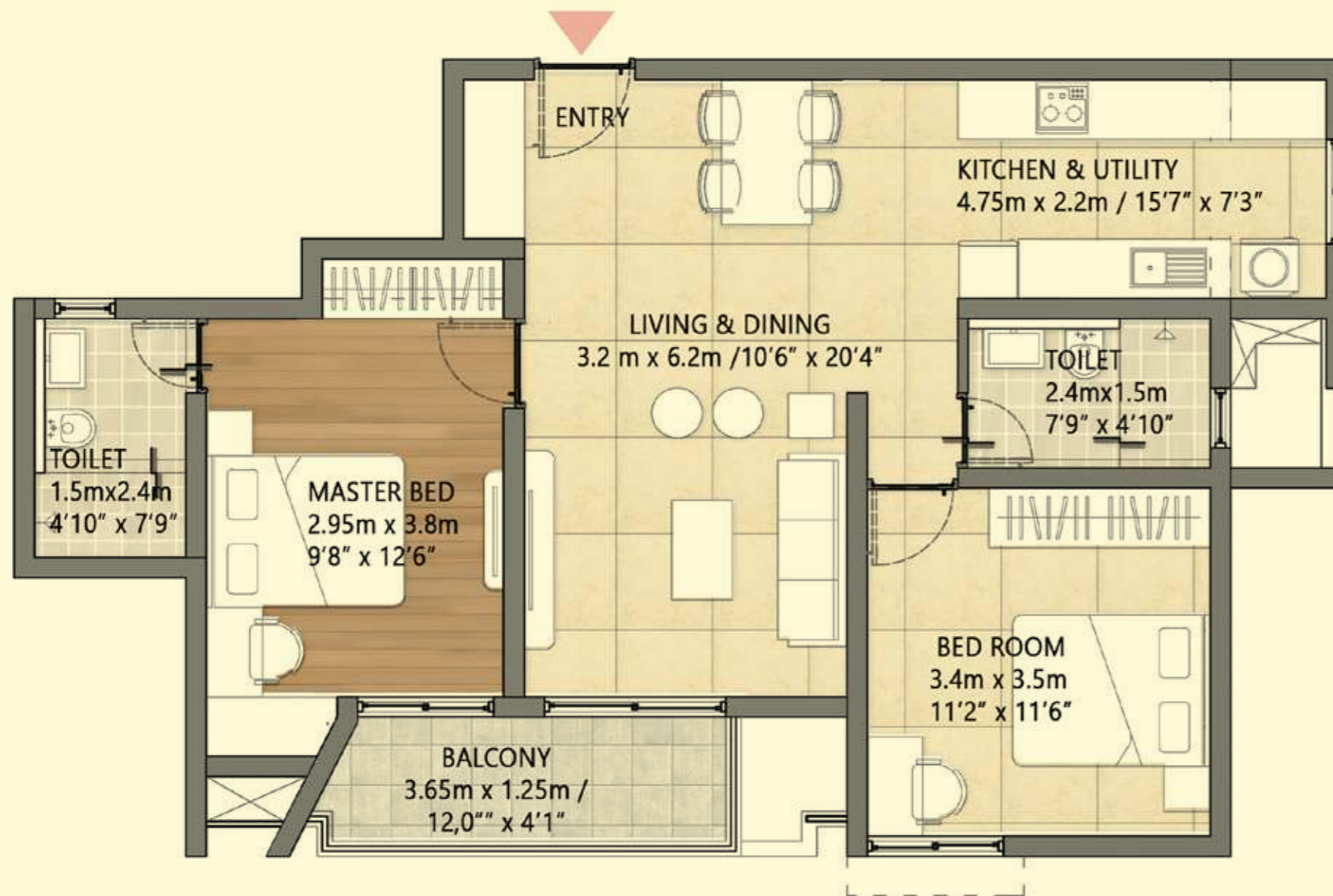


2
Bedroom
Homes



2 BHK UNIT (2 Bedroom + 2 Toilet)

KEY PLAN



SUPER BUILT-UP AREA

116.01 Sq.m (1249 Sq.ft.)

UNIT CARPET AREA

68.48 Sq.m (737.11 Sq.ft.)

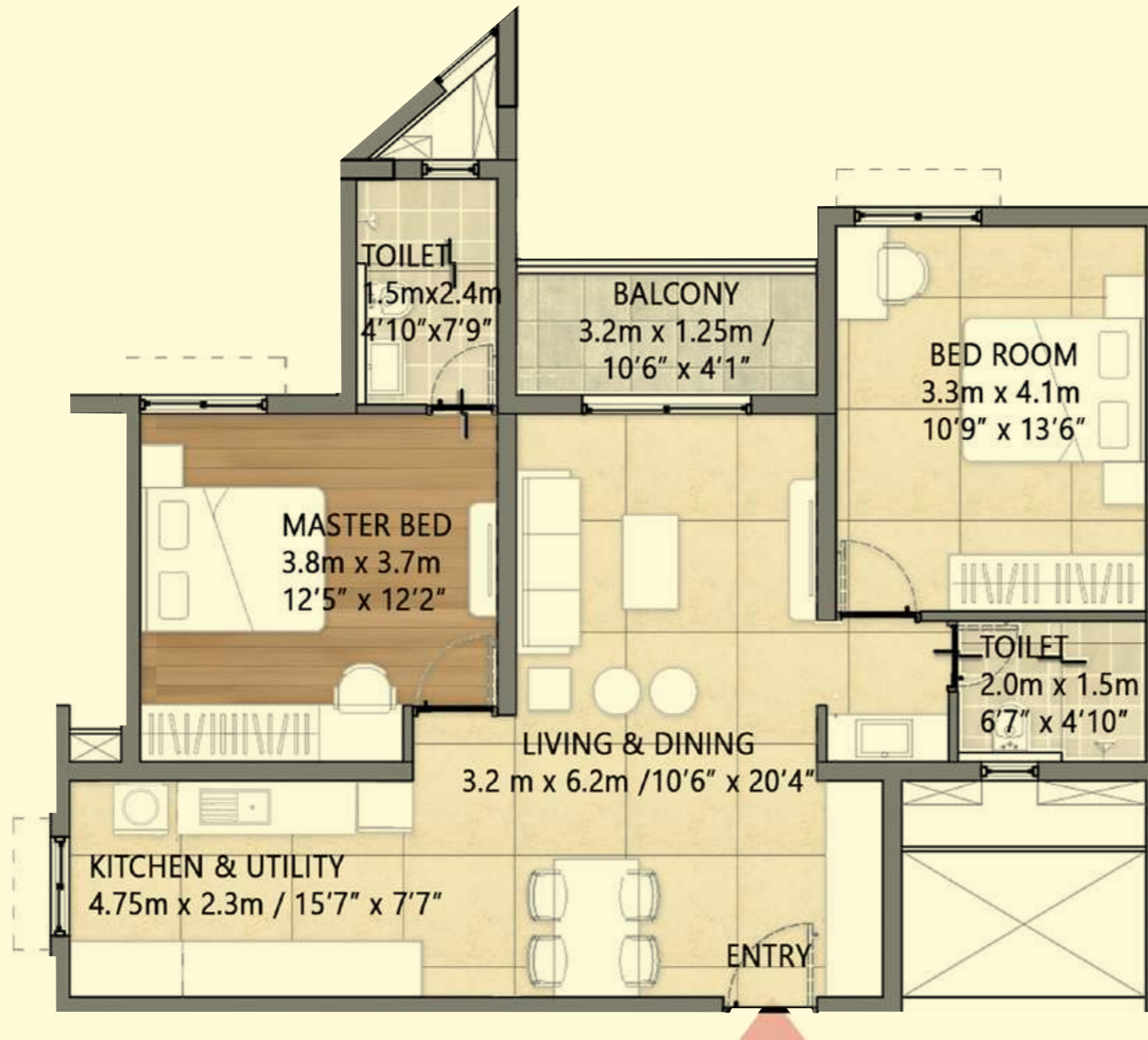
BALCONY CARPET AREA

4.87 sq.m (52.42 Sq.ft.)

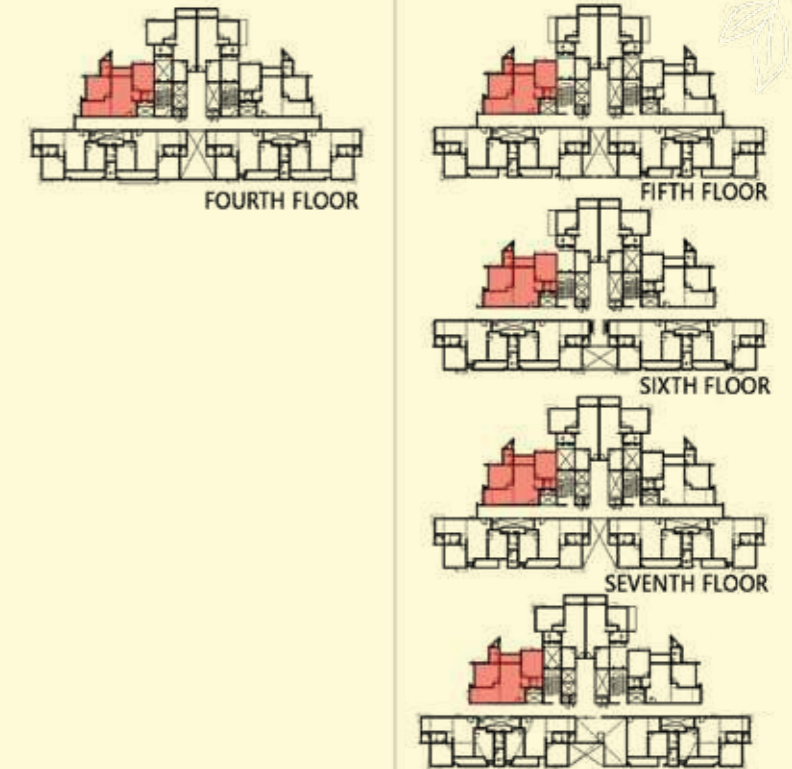
The information depicted herein viz., master plans, floor plans, furniture layout, fittings, illustrations, specifications, designs, dimensions, rendered views, colours, amenities and facilities etc., are subject to change without notifications as may be required by the relevant authorities or the developer's architect, and cannot form part of an offer or contract. Whilst every care is taken in providing this information, the Developer cannot be held liable for variations. All illustrations and pictures are artist's impression only. The information are subject to variations, additions, deletions, substitutions and modifications as may be recommended by the company's architect and/or the relevant approving authorities. The Developer is wholly exempt from any liability on account of any claim in this regard. (1 square metre = 10.764 square feet). E & OE. All dimensions and calculations are done in metric system (M/Sq.m), and imperial system (Ft/Sq.ft) shown is for reference only. All dimensions indicated in the drawing are from unfinished surfaces, excluding plaster thickness and tile thickness.

Goldspire
at
BRIGADE
ORCHARDS

2 BHK UNIT (2 Bedroom + 2 Toilet)



KEY PLAN



SUPER BUILT-UP AREA

119.51 Sq.m (1286 Sq.ft.)

UNIT CARPET AREA

71.41 Sq.m (768.66 Sq.ft.)

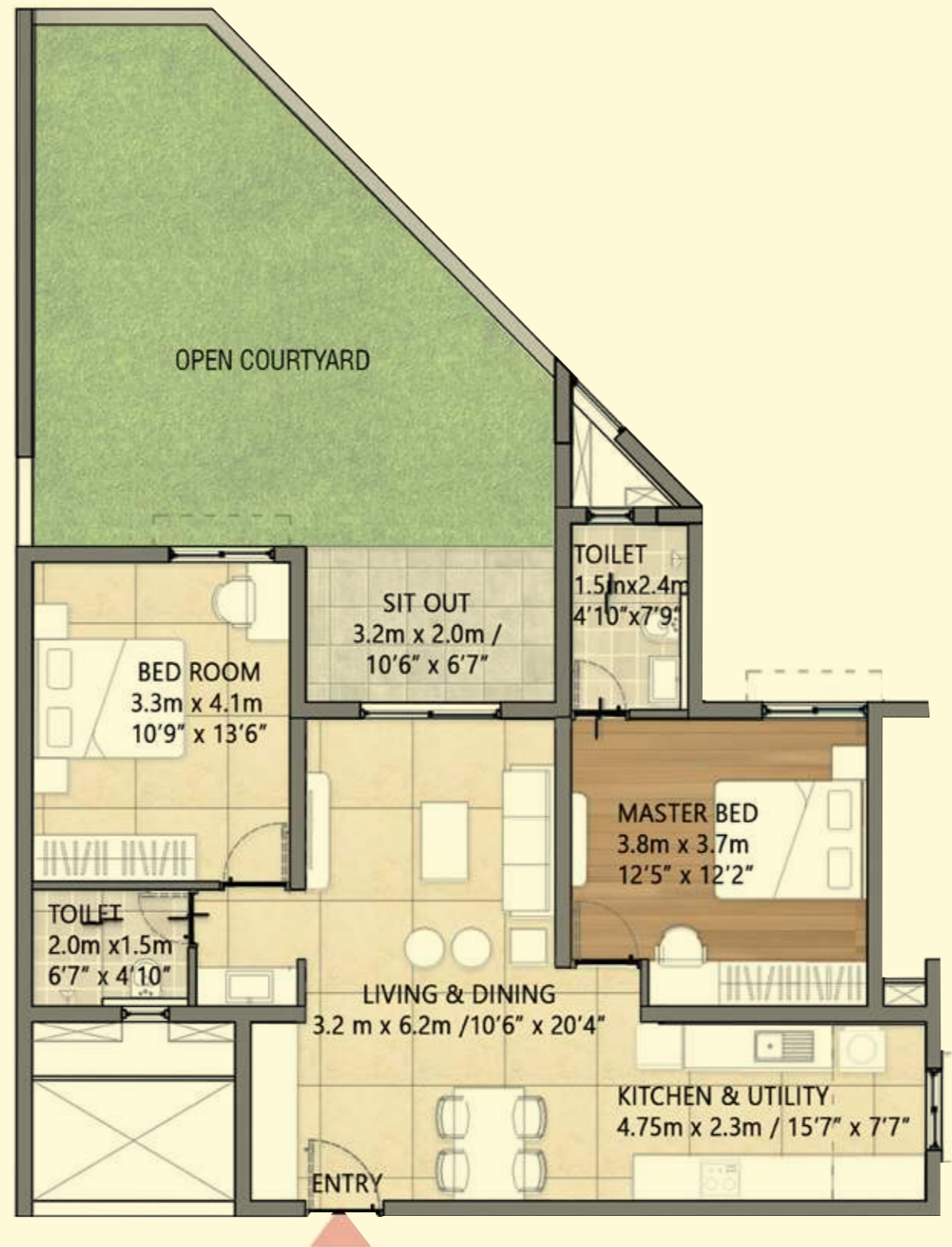
BALCONY CARPET AREA

4.00 sq.m (43.05 Sq.ft.)

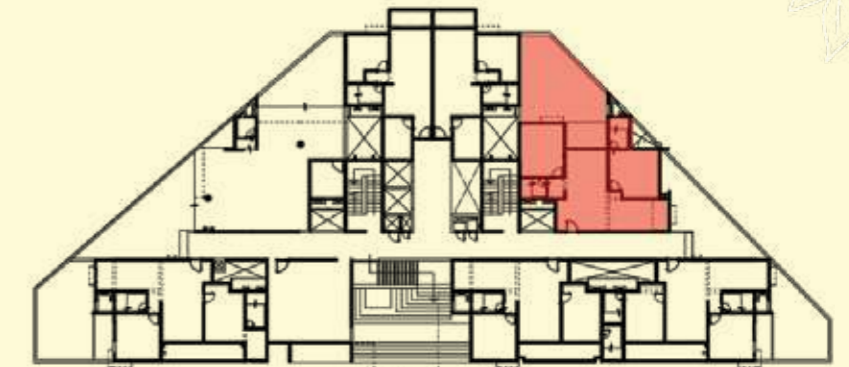
The information depicted herein viz., master plans, floor plans, furniture layout, fittings, illustrations, specifications, designs, dimensions, rendered views, colours, amenities and facilities etc., are subject to change without notifications as may be required by the relevant authorities or the developer's architect, and cannot form part of an offer or contract. Whilst every care is taken in providing this information, the Developer cannot be held liable for variations. All illustrations and pictures are artist's impression only. The information are subject to variations, additions, deletions, substitutions and modifications as may be recommended by the company's architect and/or the relevant approving authorities. The Developer is wholly exempt from any liability on account of any claim in this regard. (1 square metre = 10.764 square feet). E & OE. All dimensions and calculations are done in metric system (M/Sq.m), and imperial system (Ft/Sq.ft) shown is for reference only. All dimensions indicated in the drawing are from unfinished surfaces, excluding plaster thickness and tile thickness.

Goldspire
at
BRIGADE
ORCHARDS

2 BHK UNIT (2 Bedroom + 2 Toilet)



KEY PLAN



FIRST FLOOR

SUPER BUILT-UP AREA

119.56 Sq.m (1287 Sq.ft.)

UNIT CARPET AREA

71.41 Sq.m (768.66 Sq.ft.)

BALCONY CARPET AREA

4.48 sq.m (48.22 Sq.ft.)

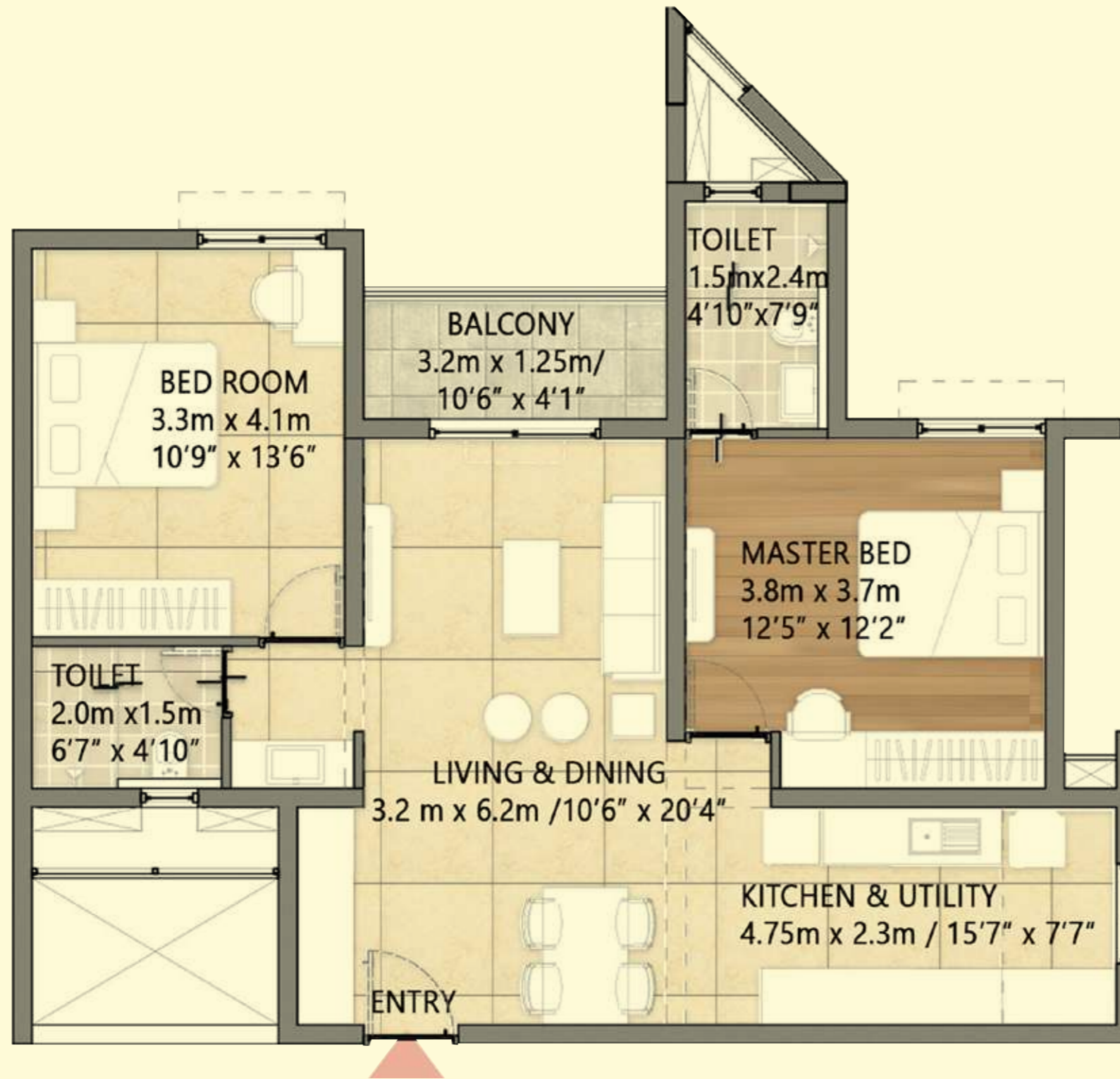
OPEN COURTYARD CARPET AREA

36.62 sq.m (394.17 Sq.ft.)

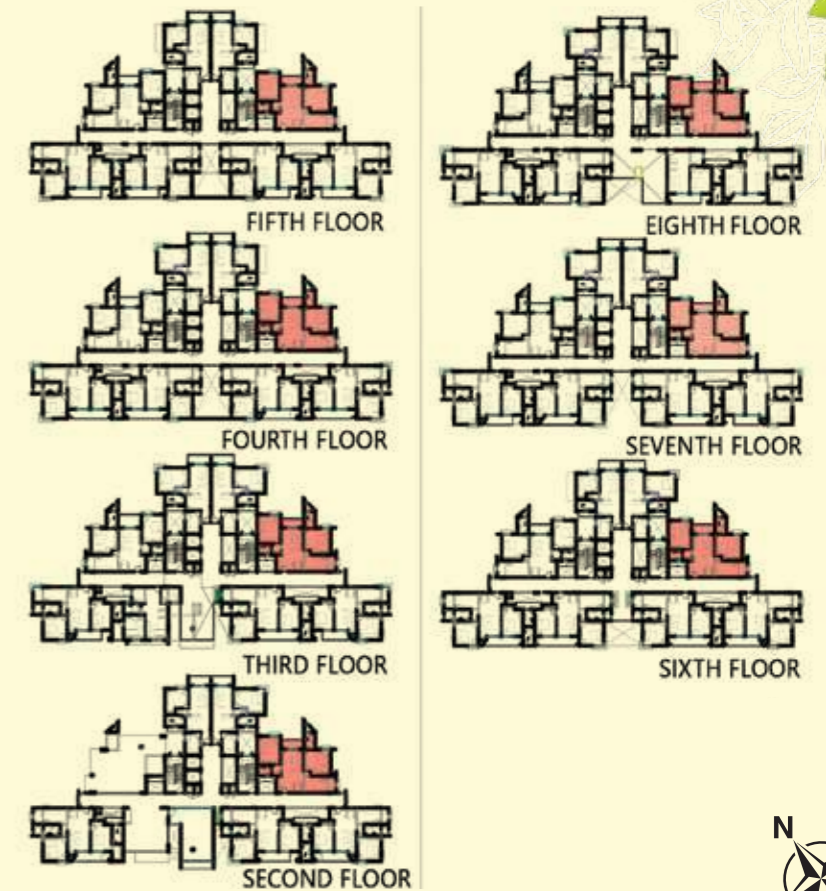
The information depicted herein viz., master plans, floor plans, furniture layout, fittings, illustrations, specifications, designs, dimensions, rendered views, colours, amenities and facilities etc., are subject to change without notifications as may be required by the relevant authorities or the developer's architect, and cannot form part of an offer or contract. Whilst every care is taken in providing this information, the Developer cannot be held liable for variations. All illustrations and pictures are artist's impression only. The information are subject to variations, additions, deletions, substitutions and modifications as may be recommended by the company's architect and/or the relevant approving authorities. The Developer is wholly exempt from any liability on account of any claim in this regard. (1 square metre = 10.764 square feet). E & OE. All dimensions and calculations are done in metric system (M/Sq.m), and imperial system (Ft/Sq.ft) shown is for reference only. All dimensions indicated in the drawing are from unfinished surfaces, excluding plaster thickness and tile thickness.

Goldspire
at
BRIGADE
ORCHARDS

2 BHK UNIT (2 Bedroom + 2 Toilet)



KEY PLAN



SUPER BUILT-UP AREA

119.56 Sq.m (1287 Sq.ft.)

UNIT CARPET AREA

71.41 Sq.m (768.66 Sq.ft.)

BALCONY CARPET AREA

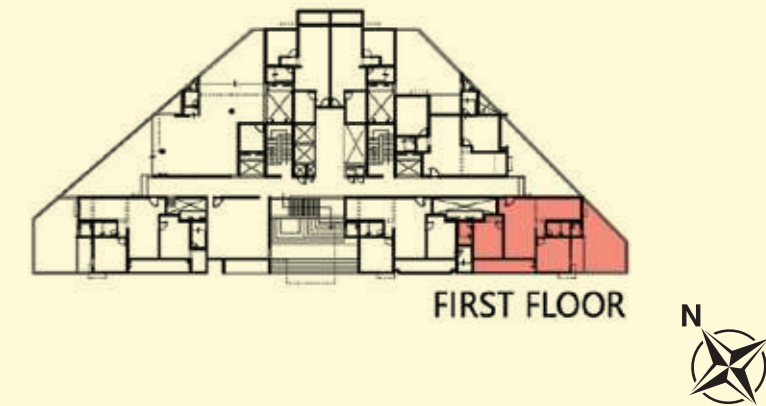
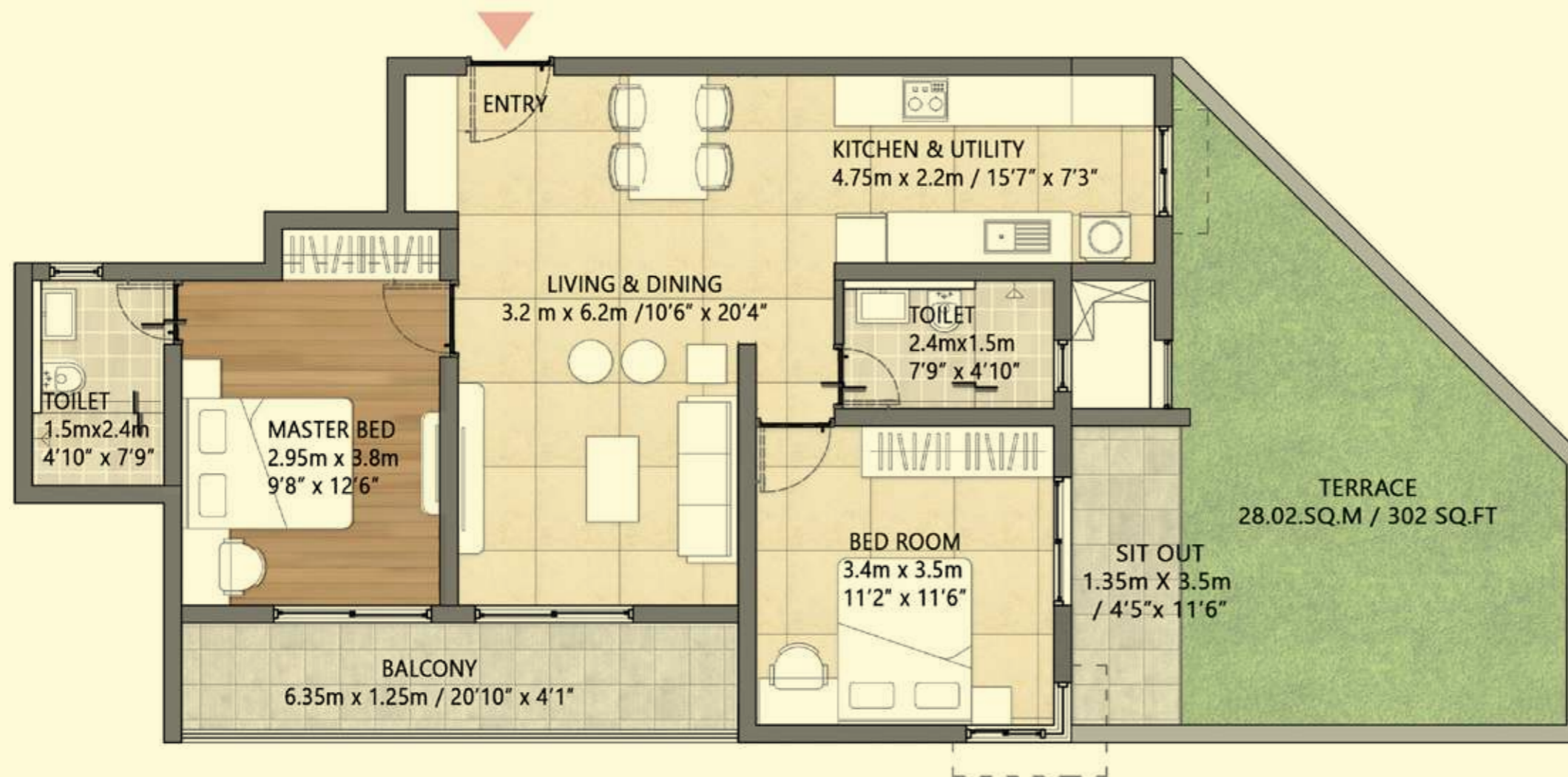
4.00 sq.m (43.05 Sq.ft.)

The information depicted herein viz., master plans, floor plans, furniture layout, fittings, illustrations, specifications, designs, dimensions, rendered views, colours, amenities and facilities etc., are subject to change without notifications as may be required by the relevant authorities or the developer's architect, and cannot form part of an offer or contract. Whilst every care is taken in providing this information, the Developer cannot be held liable for variations. All illustrations and pictures are artist's impression only. The information are subject to variations, additions, deletions, substitutions and modifications as may be recommended by the company's architect and/or the relevant approving authorities. The Developer is wholly exempt from any liability on account of any claim in this regard. (1 square metre = 10.764 square feet). E & OE. All dimensions and calculations are done in metric system (M/Sq.m), and imperial system (Ft/Sq.ft) shown is for reference only. All dimensions indicated in the drawing are from unfinished surfaces, excluding plaster thickness and tile thickness.

Goldspire
at
BRIGADE
ORCHARDS

2 BHK UNIT (2 Bedroom + 2 Toilet)

KEY PLAN



SUPER BUILT-UP AREA
120.19 Sq.m (1294 Sq.ft.)
UNIT CARPET AREA
67.77 Sq.m (729.47 Sq.ft.)
BALCONY CARPET AREA
8.00 sq.m (43.05 Sq.ft.)
OPEN COURTYARD CARPET AREA
28.02 sq.m (302 Sq.ft.)

The information depicted herein viz., master plans, floor plans, furniture layout, fittings, illustrations, specifications, designs, dimensions, rendered views, colours, amenities and facilities etc., are subject to change without notifications as may be required by the relevant authorities or the developer's architect, and cannot form part of an offer or contract. Whilst every care is taken in providing this information, the Developer cannot be held liable for variations. All illustrations and pictures are artist's impression only. The information are subject to variations, additions, deletions, substitutions and modifications as may be recommended by the company's architect and/or the relevant approving authorities. The Developer is wholly exempt from any liability on account of any claim in this regard. (1 square metre = 10.764 square feet). E & OE. All dimensions and calculations are done in metric system (M/Sq.m), and imperial system (Ft/Sq.ft) shown is for reference only. All dimensions indicated in the drawing are from unfinished surfaces, excluding plaster thickness and tile thickness.

Goldspire
at
BRIGADE
ORCHARDS

2 BHK UNIT (2 Bedroom + 2 Toilet)

KEY PLAN



THIRD FLOOR



SUPER BUILT-UP AREA

122.29 Sq.m (1316 Sq.ft.)

UNIT CARPET AREA

71.41 Sq.m (768.66 Sq.ft.)

BALCONY CARPET AREA

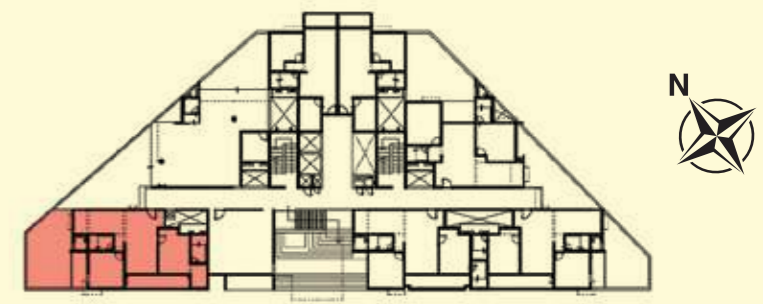
5.75 sq.m (61.89 Sq.ft.)

The information depicted herein viz., master plans, floor plans, furniture layout, fittings, illustrations, specifications, designs, dimensions, rendered views, colours, amenities and facilities etc., are subject to change without notifications as may be required by the relevant authorities or the developer's architect, and cannot form part of an offer or contract. Whilst every care is taken in providing this information, the Developer cannot be held liable for variations. All illustrations and pictures are artist's impression only. The information are subject to variations, additions, deletions, substitutions and modifications as may be recommended by the company's architect and/or the relevant approving authorities. The Developer is wholly exempt from any liability on account of any claim in this regard. (1 square metre = 10.764 square feet). E & OE. All dimensions and calculations are done in metric system (M/Sq.m), and imperial system (Ft/Sq.ft) shown is for reference only. All dimensions indicated in the drawing are from unfinished surfaces, excluding plaster thickness and tile thickness.

Goldspire
at
BRIGADE
ORCHARDS

2 BHK UNIT (2 Bedroom + 2 Toilet)

KEY PLAN



FIRST FLOOR

SUPER BUILT-UP AREA	128.57 Sq.m (1384 Sq.ft.)
UNIT CARPET AREA	72.92 Sq.m (784.91 Sq.ft.)
BALCONY CARPET AREA	7.93 sq.m (85.35 Sq.ft.)
OPEN COURTYARD CARPET AREA	36.46 sq.m (393 Sq.ft.)

The information depicted herein viz., master plans, floor plans, furniture layout, fittings, illustrations, specifications, designs, dimensions, rendered views, colours, amenities and facilities etc., are subject to change without notifications as may be required by the relevant authorities or the developer's architect, and cannot form part of an offer or contract. Whilst every care is taken in providing this information, the Developer cannot be held liable for variations. All illustrations and pictures are artist's impression only. The information are subject to variations, additions, deletions, substitutions and modifications as may be recommended by the company's architect and/or the relevant approving authorities. The Developer is wholly exempt from any liability on account of any claim in this regard. (1 square metre = 10.764 square feet). E & OE. All dimensions and calculations are done in metric system (M/Sq.m), and imperial system (Ft/Sq.ft) shown is for reference only. All dimensions indicated in the drawing are from unfinished surfaces, excluding plaster thickness and tile thickness.

Goldspire
at
BRIGADE
ORCHARDS